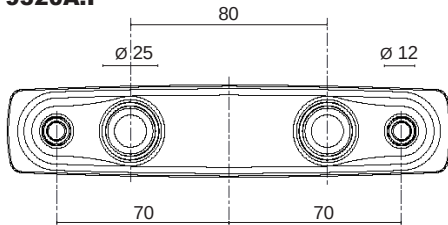
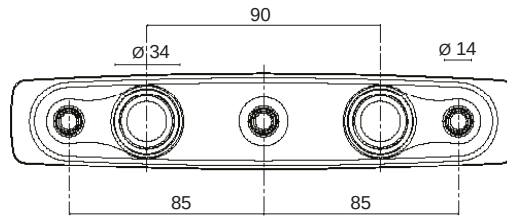


1. Scegliere la dima relativa alla bitta da montare, tracciare la posizione ed eseguire i fori come indicato (dime in scala a fondo pagina).  
 Choose the template for the cleat to be mounted, plot the positions and run the holes as indicated (scale models in the final pages).

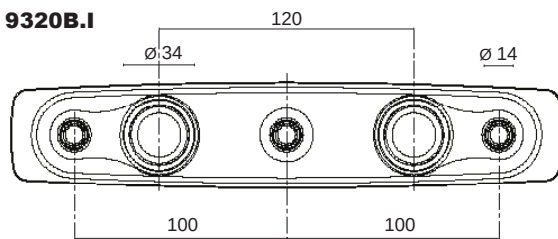
**9320A.I**



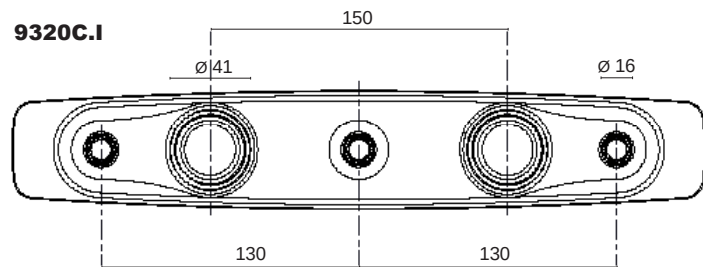
**9320AB.I**



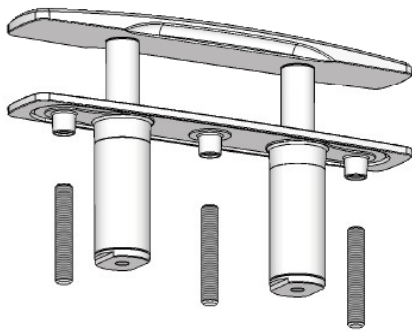
**9320B.I**



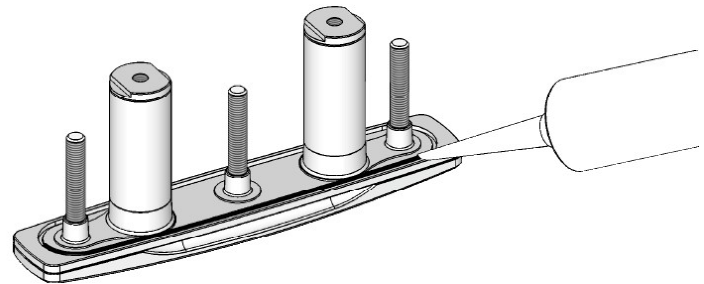
**9320C.I**



2. Avvitare i tiranti in dotazione negli appositi fori filettati, fino al completo serraggio.  
 Screw the supplied tie rods into the threaded holes, until fully tightened.



3. Pulire accuratamente la superficie posteriore della base e applicare del sigillante.



4. Posizionare la bitta nell'apposita sede forata precedentemente, con il sigillante, e assicurarsi il corretto funzionamento.

Avvitare e bloccare i dadi in dotazione sui tiranti (consigliamo di utilizzare delle rondelle).  
 Place the cleat with the sealant in the previously drilled seat. Ensure that the substructure is correctly functioning.  
 Screw and lock the nuts provided on the tie rods (we recommend using washers).

