



### Features

- When the knob is pushed in, the product becomes flush with its surroundings for a safe and smart design.
- Pushing the knob in while the door is closed will lock it. Pushing the knob again will unlock it.
- Available for both overlay and inset doors.
- This product is sold as a set and comes with both a latch and a push knob

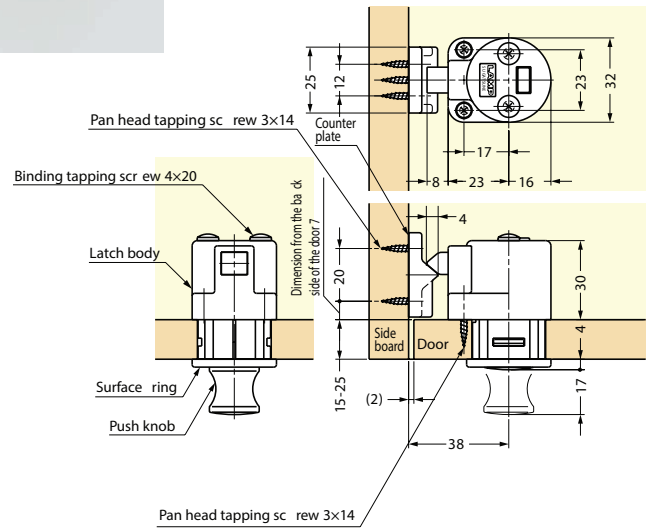
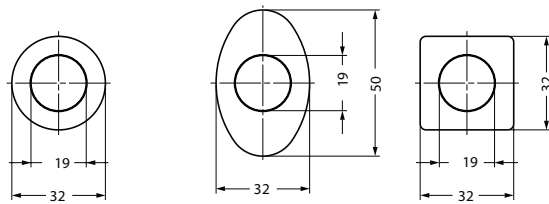
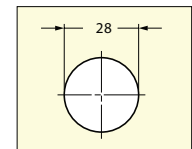
### Parts Included

- Binding head tapping screw 4x20 (SUS)
- Pan head tapping screw 3x14 (SUS)

### Latch Body and Counter Plate



### Cut Out Dimensions



Part Name	Material
Latch Body-Counter Plate	ABS
Push Knob-Surface Ring	Zinc Alloy (ZDC)

Item Code	Item Name	Finish	Retaining Force N	Retaining Force kgf	Weight	Box	Carton
140-014-739	DPL-RO-G	Gold (Clear/Paint)	98 N	10 kgf	72 g	10 pcs	80 pcs
140-014-740	DPL-RO-CR	Chrome	98 N	10 kgf	72 g	10 pcs	80 pcs
140-014-734	DPL-OV-G	Gold (Clear/Paint)	98 N	10 kgf	83 g	10 pcs	80 pcs
140-014-735	DPL-OV-CR	Chrome	98 N	10 kgf	83 g	10 pcs	80 pcs
140-014-737	DPL-SQ-G	Gold (Clear/Paint)	98 N	10 kgf	78 g	10 pcs	80 pcs
140-014-738	DPL-SQ-CR	Chrome	98 N	10 kgf	78 g	10 pcs	80 pcs
140-014-736	DPL-SQ-SN	Satin Nickel	98 N	10 kgf	78 g	10 pcs	80 pcs