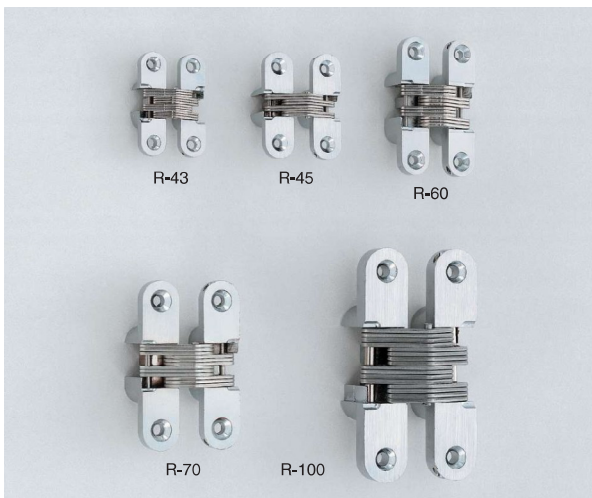


CONCEALED HINGE R



- Stainless steel (SUS304) arm has sufficient strength and superior corrosion resistance.
- R-100 adopts a roller as guide pin, making smooth movement even under high load.
- Can be widely used from wooden doors to sheet metal doors.
- Torque hinge types also available **1** .

[Remarks]

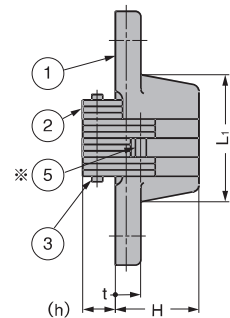
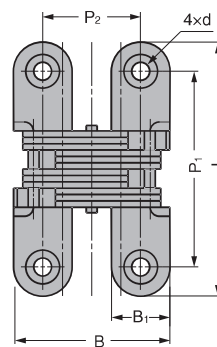
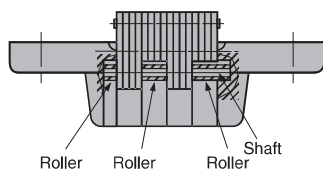
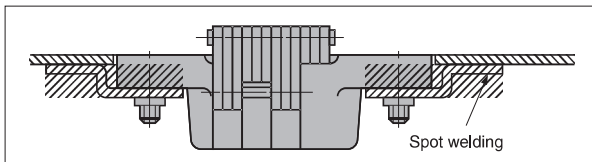
- Distance to door edge must be less than Xmm.
- Roller is supplied to R-100 only.
- Recommended for use in pairs.

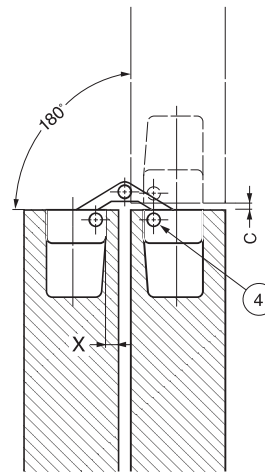
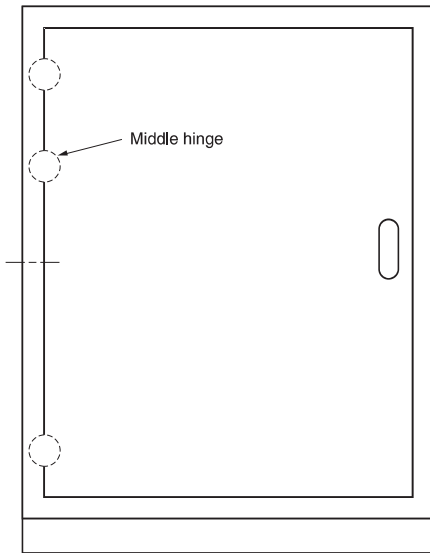
[Parts Included]

- Countersunk head wood screw (SUS)
- Countersunk head tapping screw (SUS) (R-70 only)



[Metal Door]





(Reference)

When hanging a door with 3 hinges, a large load is applied to the upper hinge, so the middle hinge is preferably set at about 1/2 of the distance from the midpoint of upper and lower hinges to the upper hinge.

No.	Part Name	Material					Finish
		R-43	R-45	R-60	R-70	R-100	
①	Body	Zinc Alloy					Satin Chrome
②	Arm	Stainless Steel (SUS304)					Plain
③	Shaft	Stainless Steel			Stainless Steel	Stainless Steel	
④	Shaft	Stainless Steel (SUS304)			Stainless Steel (SUS303)	Steel	
⑤	Shaft						Nickel
※	Roller (R-100 only)	-					

RoHS	CAD	Item Code	Item Name	L	L ₁	B	B ₁	P ₁	P ₂	H	h	t	d	C	X	Screw	Number of Arms	Door Width	Door Height	Door Weight kg/2 pcs	Opening Angle	Weight (g)	Box (pcs)	Carton (pcs)
		170-090-079	R-43	43	22	29	11	32	18	13	5	5	φ3.5 φ6.2	0,8	2,3	3,1x16	12	Max. 450	Max. 700	Max. 4	180°	37	30	300
		170-090-084	R-45	45	19	35,7	13	47	22,7	18,5	6	5	φ3.5 φ7		3	3,1x20	8			Max. 4		56	20	200
		170-090-081	R-60	60	33	35,2			22,2		6,5	6,5	φ4.3 φ8,3	1		3,5x20			Max. 4	94	10	100		
		170-095-200	R-70	70	35	42,6	16,1	53	26,6	23	7,3	7	φ4.6 φ9,1	1,2	3,5	4x25	12		Max. 7		157	10	-	
		170-095-201	R-100	100	52	53,2	20	80	33,2	27,5	9,5	9,5	φ5.3 φ10	1,8	4,8	4,5x32	16			Max. 7		342	10	60

Refer to : P.44



SYDNEY - MELBOURNE - GOLD COAST - PERTH - AUCKLAND
 G45, 76-84 WATERWAY DRIVE COOMERA, QLD, 4209, AUSTRALIA

Phone: +61 417 950 455
 Email: sales@gineico.com
 WWW.GINEICOMARINE.COM.AU