



9335 Stainless Steel Cleat

Polished stainless steel cleat

- Finish: 316 grade mirror polished stainless steel
- Viton seal technology for durability and performance
- Available in three lengths: 180mm | 260mm | 350mm



G45, 76-84 WATERWAY DRIVE COOMERA, QUEENSLAND, 4209, AUSTRALIA

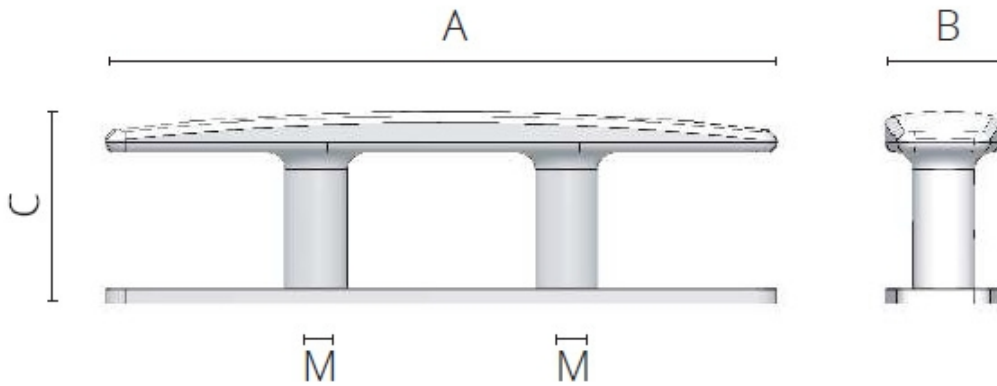
PHONE: (+61) 7 5556 0244

EMAIL: SALES@GINEICOMARINE.COM.AU

WWW.GINEICOMARINE.COM.AU



GINEICO



| | A | B | C | M |
|----------------|----------|----------|----------|----------|
| 9335A.I | 180 | 37 | 52 | M10 |
| 9335B.I | 260 | 50 | 72 | M12 |
| 9335C.I | 350 | 60 | 99 | M16 |

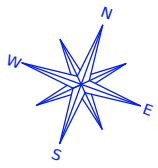
G45, 76-84 WATERWAY DRIVE COOMERA, QUEENSLAND, 4209, AUSTRALIA

PHONE: (+61) 7 5556 0244

EMAIL: SALES@GINEICOMARINE.COM.AU

WWW.GINEICOMARINE.COM.AU





A

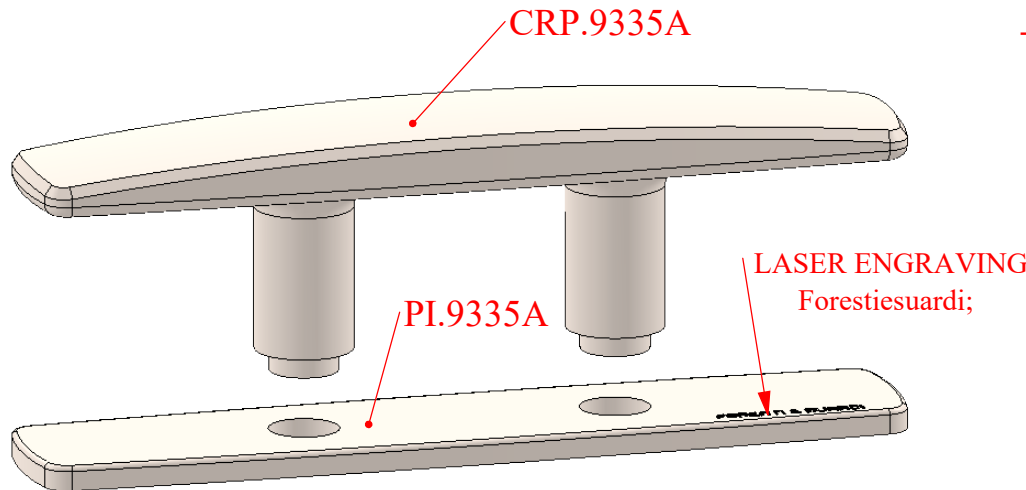
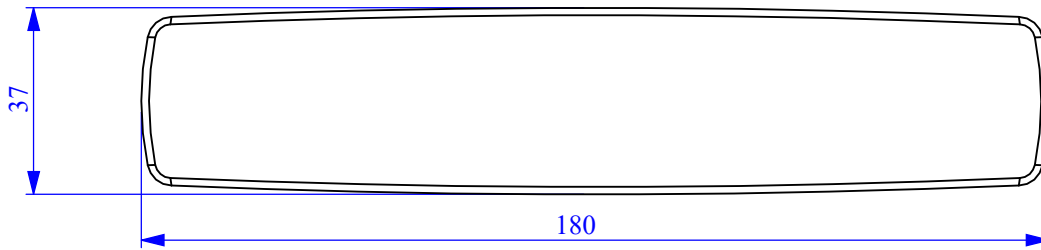
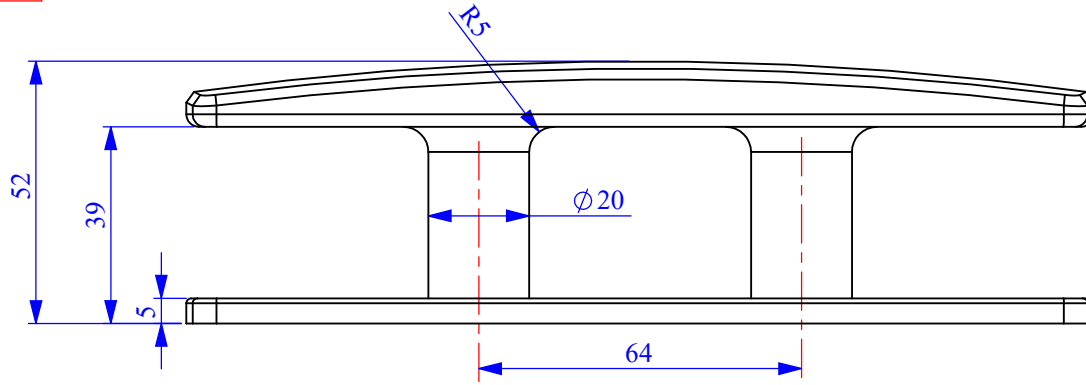
B

C

D

E

| | | | |
|----------------------------------------------------------------------|--------------------------------------------------------------------------------------------------|--------------------------------|---------------------------------|
| QUOTE SENZA INDICAZIONE DI TOLLERANZA DIMENSION WITHOUT TOLERANCE | | | |
| UNI ISO 2768 | <input checked="" type="checkbox"/> PRECISO | <input type="checkbox"/> MEDIO | <input type="checkbox"/> GROSS. |
| RAGGI RADIUS | tutti i raggi non quotati e non rappresentati, ma essenziali per la lavorazione, hanno valore | | R 1mm |

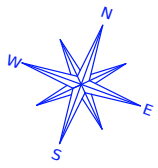


NOTE:

- The body must assemble with the plate without large gaps and has to remain not bent;
- Shine all visible surfaces except the base surface guaranteeing an mirror polish **without scratches and grooves;**
- The cleats have to be completed of n°2 nuts and ties M10X100 in AISI 304 (A2);
- Electropolish and ultrasonic cleaning the cleat after all polishing operations to avoid possible oxidation;
- Respect all the indicated radius;
- LASER ENGRAVING Forestiesuardi;
- Guarantee 700 h in salt spray (ASTM B117).

Questo disegno e di proprieta esclusiva della societa FORESTI & SUARDI S.p.a e non puo essere riprodotto ne ceduto a terzi senza autorizzazione scritta.
This drawing is exclusive property of FORESTI & SUARDI S.p.a it cannot be reproduced or given to third parties without written agreement

| | | | |
|--------------------------------------------|----------------------------------|------------------|----------------|
| MATERIALE MATERIAL | Acciaio inox AISI 316L | | |
| PESO Sp DENSITY | Kg/ cm3 | VOLUME VOLUME | cm3 |
| | | MASSA MASS | Kg |
| NOTE NOTES | SCALA SCALE | 1:1 | TAV-N SHEET |
| | DESIGNATORE DESIGNER | Bonardi Mirko | |
| | CODICE COMPONENTE NUMBER PART | | |
| | 9335A | | |
| DESCRIZIONE COMPONENTE PART DESCRIPTION | | | |
| Stailles steel AISI 316L | | | |
| Dim. 180x37mm H.tot.52mm | | | |
| FIRMA SIGNATURE | | | |



A

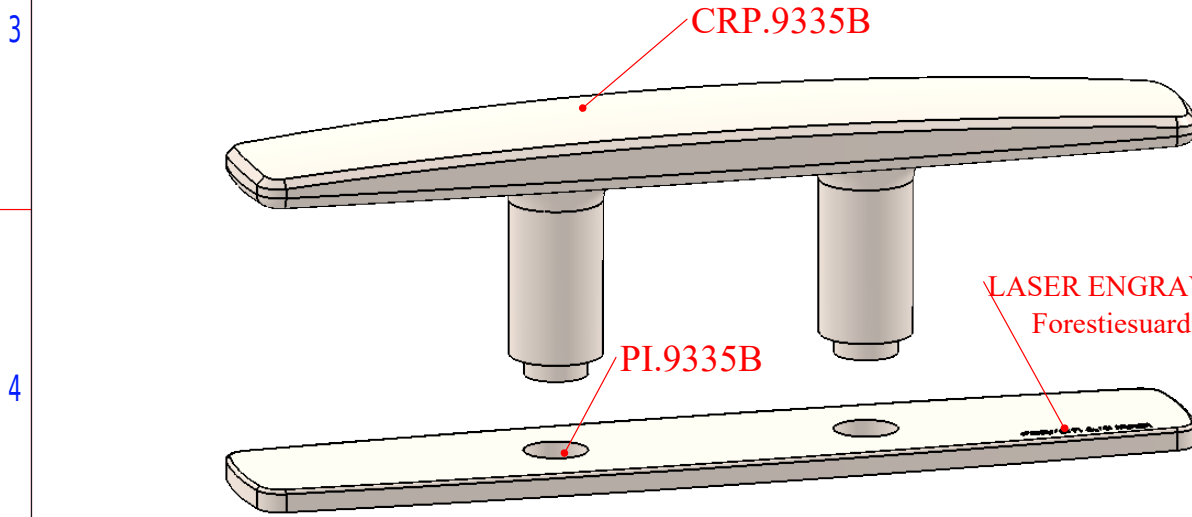
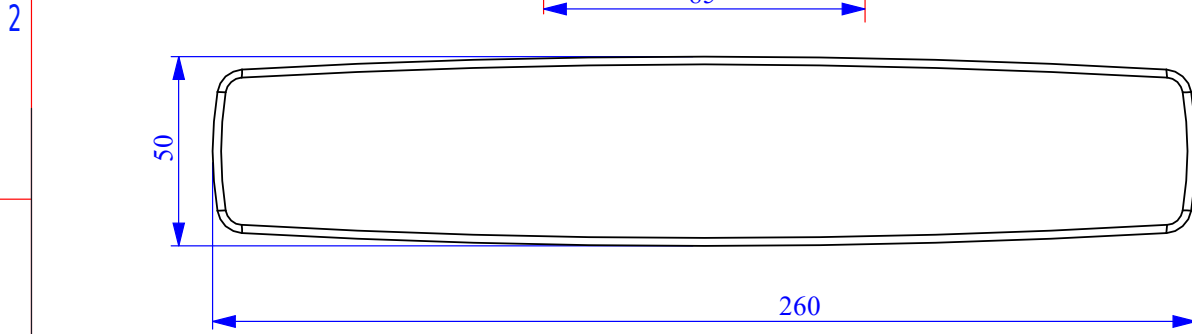
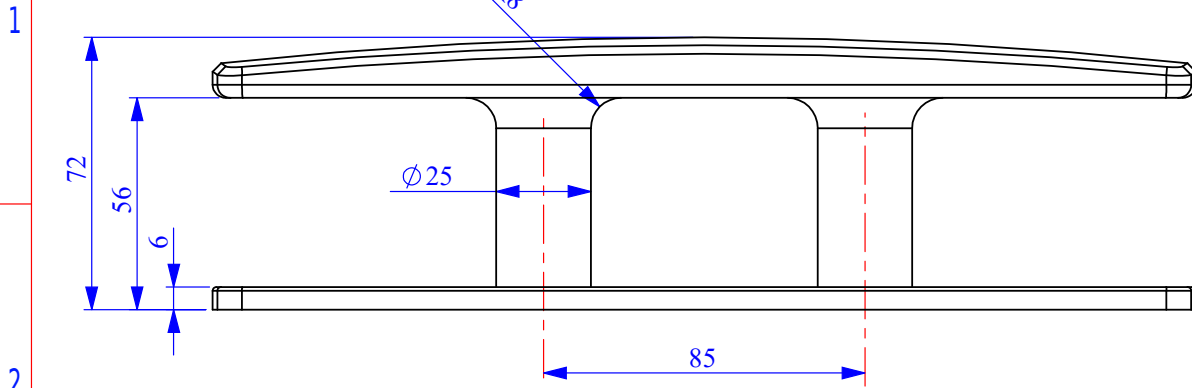
B

C

D

E

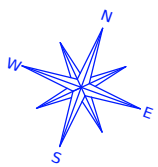
| | | | |
|----------------------------------------------------------------------|--------------------------------------------------------------------------------------------------|--------------------------------|---------------------------------|
| QUOTE SENZA INDICAZIONE DI TOLLERANZA DIMENSION WITHOUT TOLERANCE | | | |
| UNI ISO 2768 | <input checked="" type="checkbox"/> PRECISO | <input type="checkbox"/> MEDIO | <input type="checkbox"/> GROSS. |
| RAGGI RADIUS | tutti i raggi non quotati e non rappresentati, ma essenziali per la lavorazione, hanno valore | | R 1mm |



NOTE:

- The body must assemble with the plate without large gaps and has to remain not bent;
- Shine all visible surfaces except the base surface guaranteeing an mirror polish without scratches and grooves ;
- The cleats have to be completed of n°2 nuts and ties M12X100 in AISI 304 (A2);
- Electropolish and ultrasonic cleaning the cleat after all polishing operations to avoid possible oxidation;
- Respect all the indicated radius;
- LASER ENGRAVING Forestiesuardi;
- Guarantee 700 h in salt spray (ASTM B117).

| | | | |
|-------------------------|--------------------------------------------|------------------|-----|
| MATERIALE MATERIAL | Acciaio inox AISI 316L | | |
| PESO Sp DENSITY | Kg/ cm3 | VOLUME VOLUME | cm3 |
| | | MASSA MASS | Kg |
| SCALA SCALE | 1:2 | TAV-N SHEET | 1 |
| DISEGNATORE DESIGNER | Bonardi Mirko | | |
| | CODICE COMPONENTE NUMBER PART | | |
| | 9335B | | |
| | DESCRIZIONE COMPONENTE PART DESCRIPTION | | |
| | Stailles steel AISI 316L | | |
| | Dim.260x50mm H.tot.72mm | | |
| NOTE NOTES | FIRMA SIGNATURE | | |



A

B

C

D

E

QUOTE SENZA INDICAZIONE DI TOLLERANZA
DIMENSION WITHOUT TOLERANCE

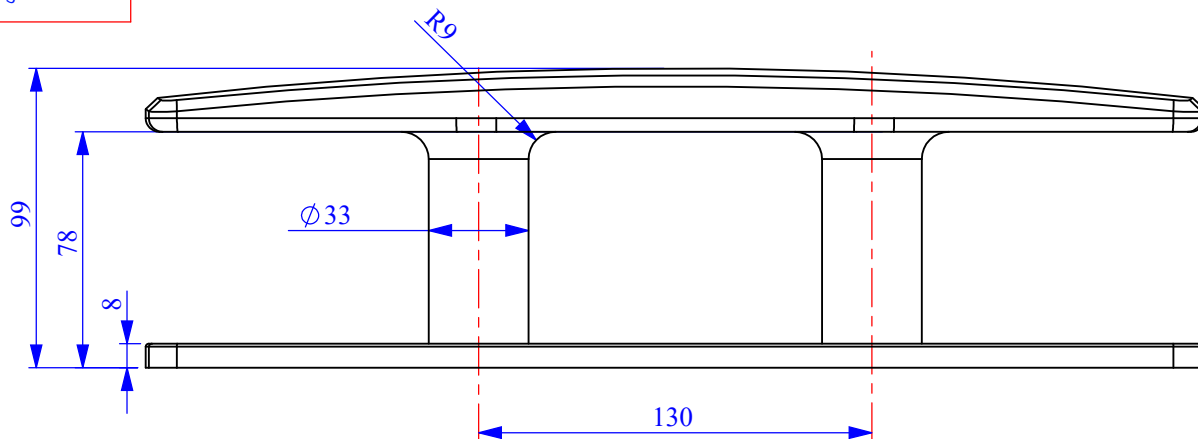
UNI ISO 2768

 PRECISO MEDIO GROSS.RAGGI
RADIUS

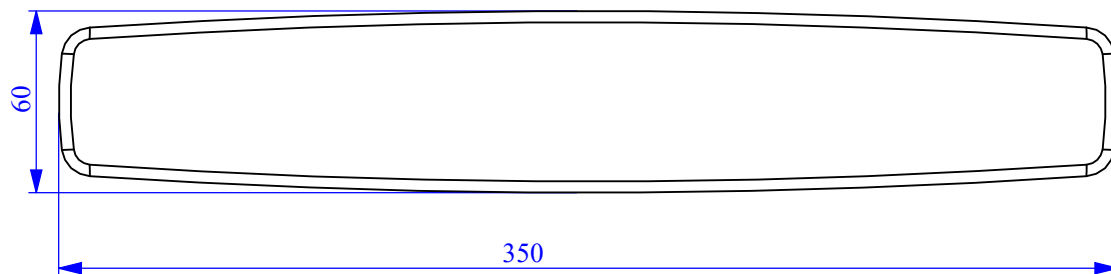
tutti i raggi non quotati e non rappresentati,
ma essenziali per la lavorazione, hanno valore

R 1mm

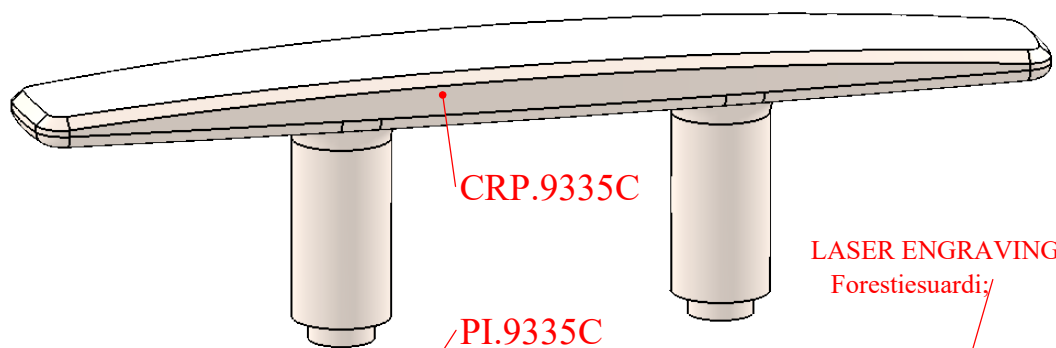
1



2



3



4

Questo disegno e di proprieta esclusiva della societa FORESTI & SUARDI S.p.a e non puo essere riprodotto ne ceduto a terzi senza autorizzazione scritta.
This drawing is exclusive property of FORESTI & SUARDI S.p.a and cannot be reproduced or given to third parties without written agreement

NOTE:

- The body must assemble with the plate without large gaps and has to remain not bent;
- Shine all visible surfaces except the base surface guaranteeing an mirror polish **without scratches and grooves**;
- The cleats have to be completed of n°2 nuts and ties M16X100 in AISI 304 (A2);
- Electropolish and ultrasonic cleaning the cleat after all polishing operations to avoid possible oxidation;
- Respect all the indicated radius;
- LASER ENGRAVING Forestiesuardi;
- Guarantee 700 h in salt spray (ASTM B117).

| | | | |
|-----------------------|-------------------------|--------------------------------------------|----------------|
| MATERIALE MATERIAL | Acciaio inox AISI 316L | | |
| PESO Sp DENSITY | Kg/ cm3 | VOLUME VOLUME | cm3 |
| | | MASSA MASS | Kg |
| | SCALA SCALE | 1:2.5 | TAV-N SHEET |
| | | | 1 |
| | DISEGNATORE DESIGNER | Bonardi Mirko | |
| | | CODICE COMPONENTE NUMBER PART | |
| | | 9335C | |
| | | DESCRIZIONE COMPONENTE PART DESCRIPTION | |
| | | Stailles steel AISI 316L | |
| | | Dim.350x60mm H.tot.99mm | |
| NOTE NOTES | FIRMA SIGNATURE | | |